

1. Special note

1.1 Power requirements:

Please follow the standard of electrical appliances.

Check if the power supply is OK before it works.

Protect the supply cords from being pressed or squeezed.

Do not overlapping use cellaneous power, otherwise it might cause equipment damage.

1.2 Enviromental requirements

Do not place the device in a damp, dusty, extremely hot cold, strong electromagnetic radiatio location.

Do not block the nearby air vent to avoid heat accumulation.

Please put the device oriented horizontally and avoid intalling at a violent vibration place.

1.3 Security and maintenance

Do not touch the device with wet hands or wet items to avoid eletric shock.

Please note the alarm of the device, and handle in time. Please change the default password timely to avoid being stolen.

Do not let any luquid into the device to avoid damaging the internal elements.

Non-professionals do not disassemble the device by themsleves, otherwise, it might cause it not to work or to stop working.

2. Software installation-Mobile app download, installation



Note: IOS system can search and download V12 directly on App Store.

Android system can download via <http://www.yunyis.com/V12.apk>, also can download on all kind of app store.


3. Connection and settings

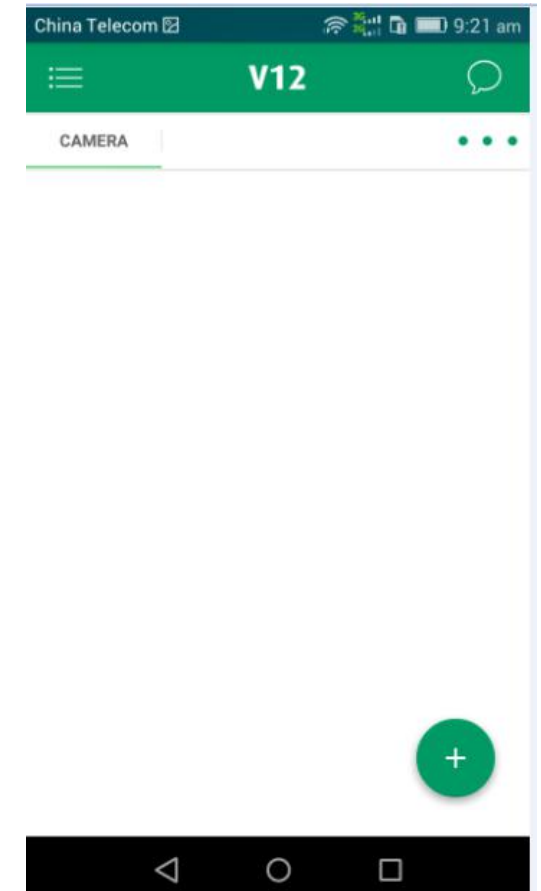
wifi settings

Tips: please check if router connects outside network before the camera connects the router. While it's wireless connection, please make sure if your phone connects WIFI.

1.open the app and click the signs below “LoginSign up (Wechat, Facebook,Registration)” or “Non registered landing”, select the login method into the interface.



2.afterf that click right button  add new device or add new networked device.

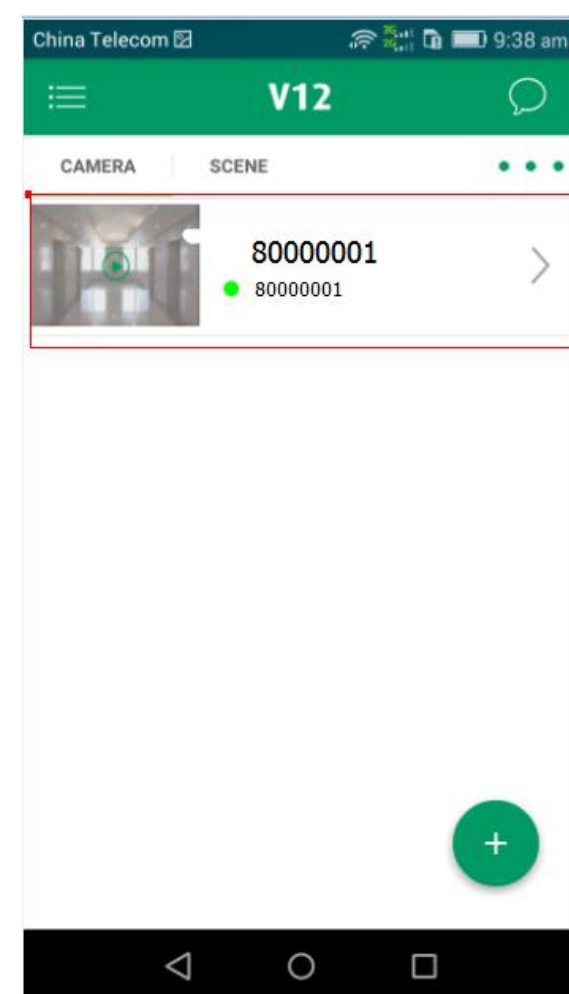
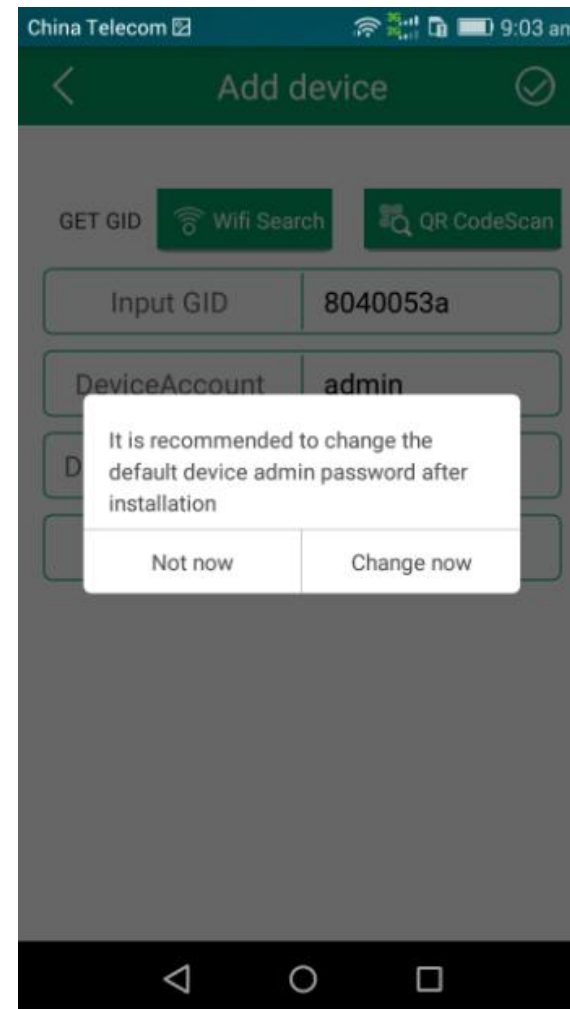
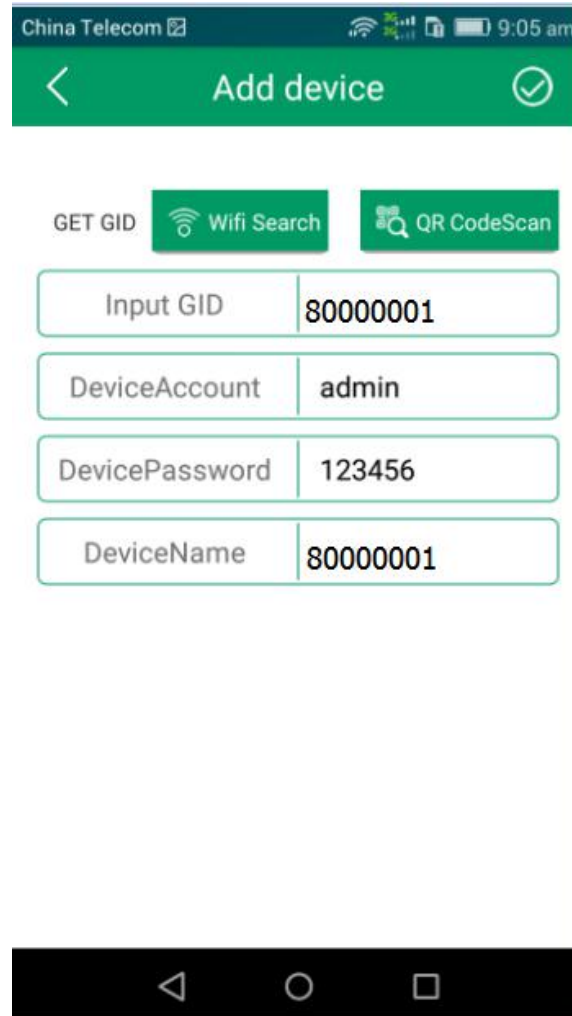
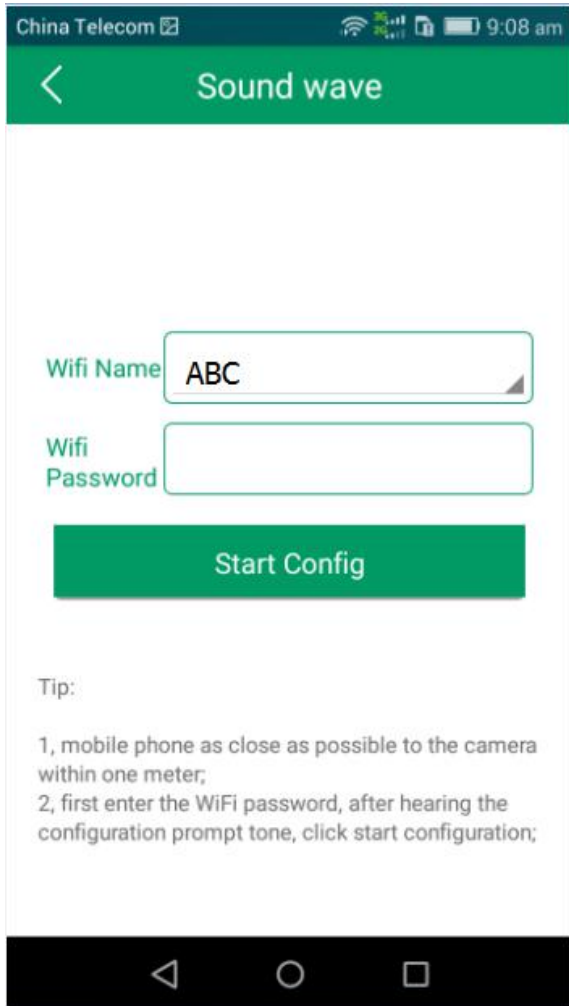


3. When connecting the device for the first time, power on the camera you will hear "Ding-dong" then press the "reset" button for 3 secs until hear the voice "didi" and the blue indicator blink rapidly, then loosen the button. Then input the wifi name, password, and start configuration wifi. During configuration progress, you will hear the mobile phone make a sound "didi" and wait for the wifi ipc make a sound "didi" as responses.

4. after the sonic configuration, please click "confirm". when hear "dingdong", it shows connected successfully. You can see the device information, then click next step.

5. modify password or not (original password: 123456). For your privacy, we suggest you to set the new password. When finished, click save.



6. After that, back to main interface, you can see the device on the list, click it and real time monitor. Special note: Do not lock the screen or exiting the software during connecting, or else will cause wrong connection or connection fails, then need to reset to factory setting and add again.



way to add networked device

wifi search(same wifi for device and networked device), or you can type device ID and device name

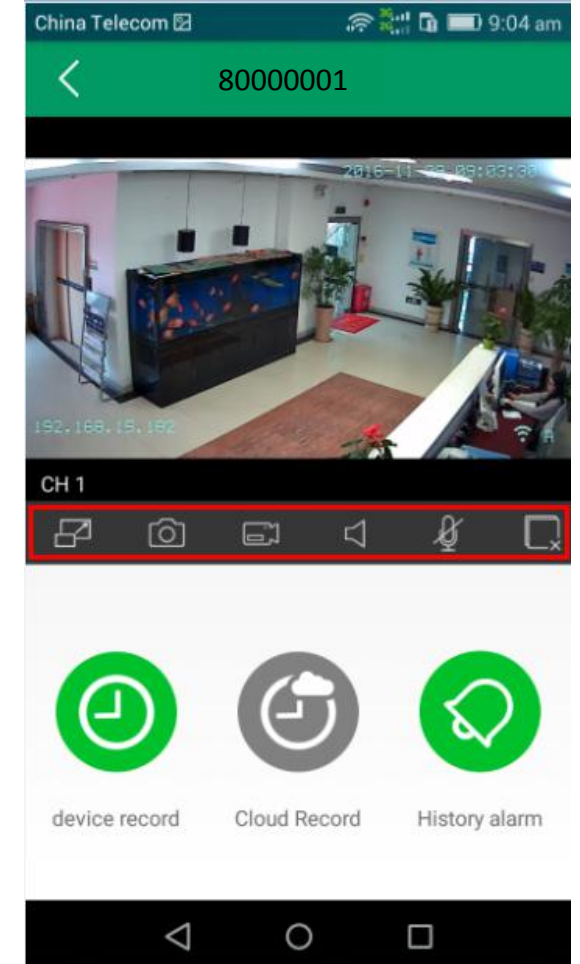
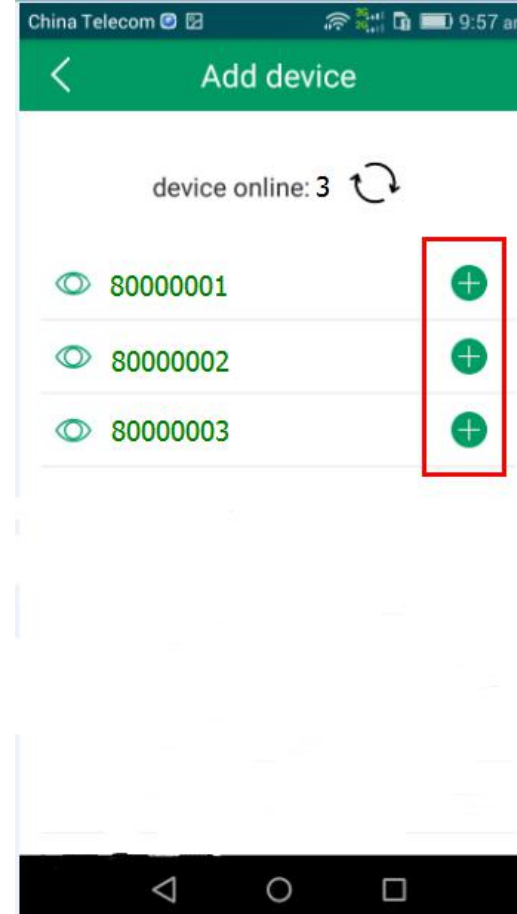
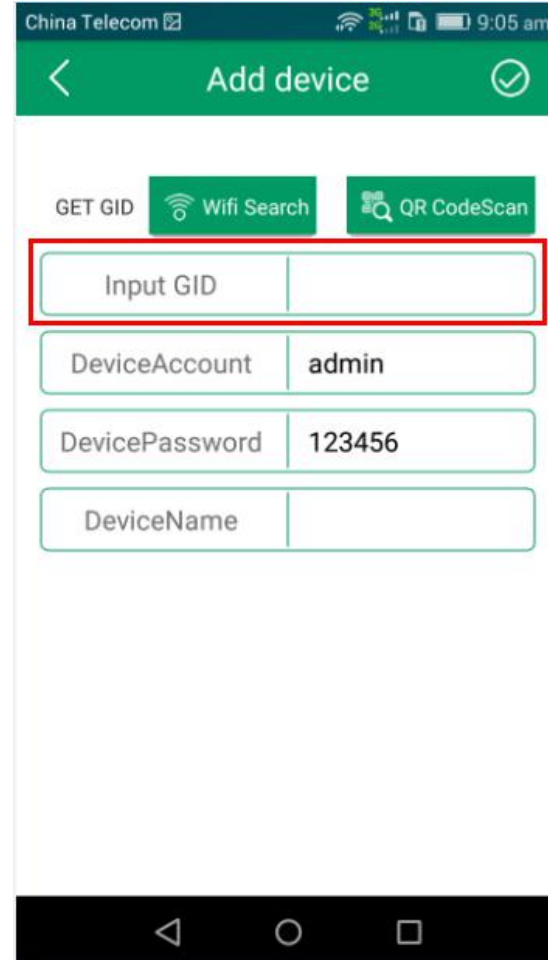
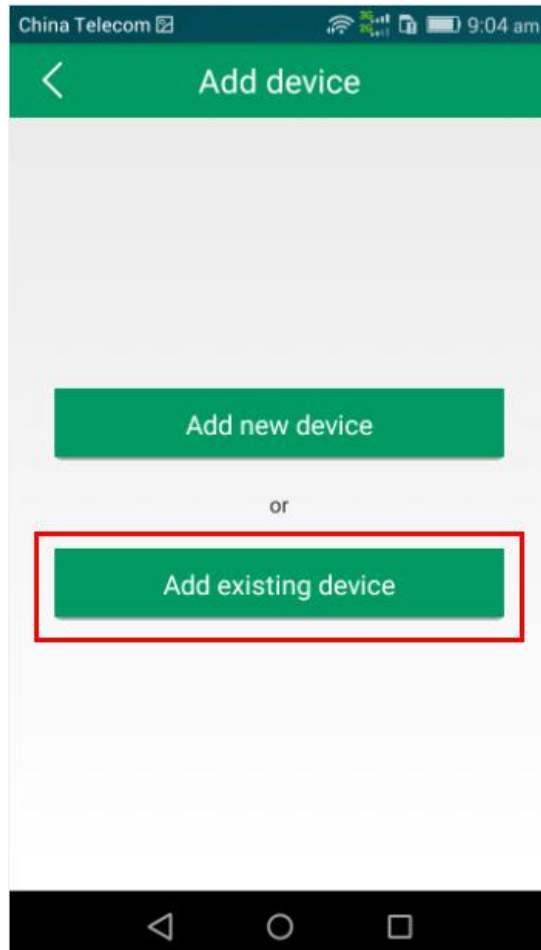
click "Add existing device" into the interface

Enter the known ID, and click  save, then can add to the list.
Or click  Wifi Search

You can see the online device, then choose the right device ID to connect

4. Main function introduction

Real-time review control
guideline: full / half screen switch, capture, recording(saved on client's device), monitor, intercome, HD switch. Cloud function can control on monitor screen.

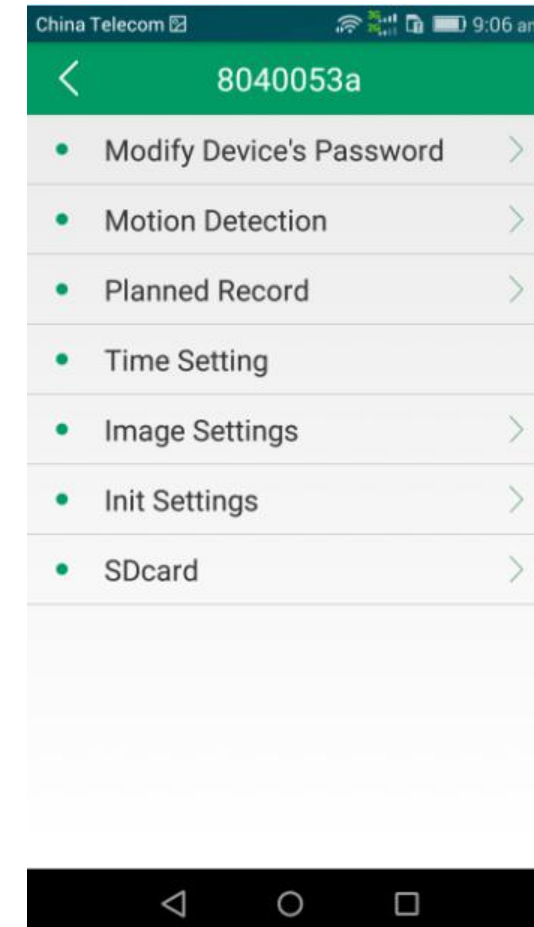
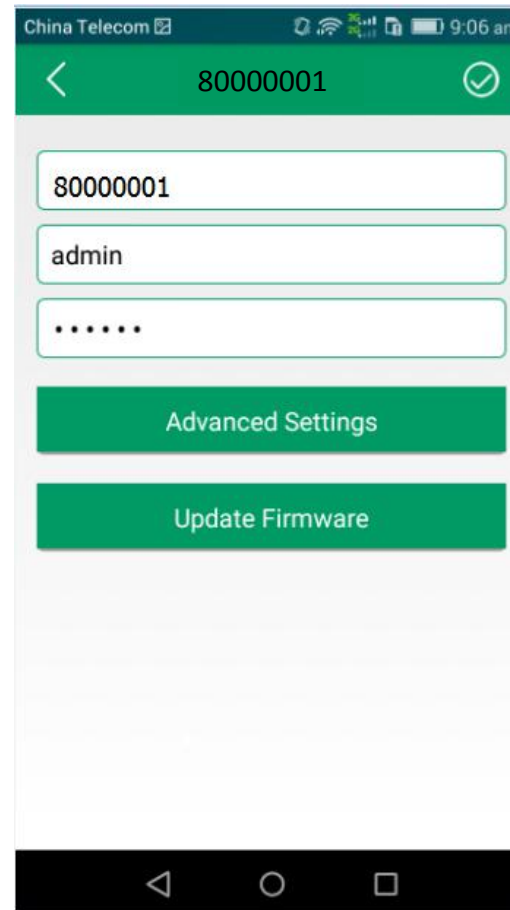
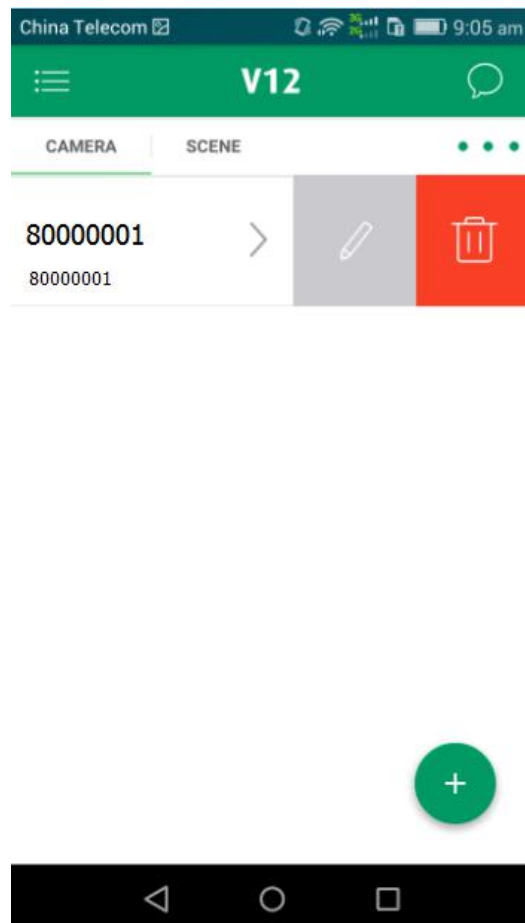
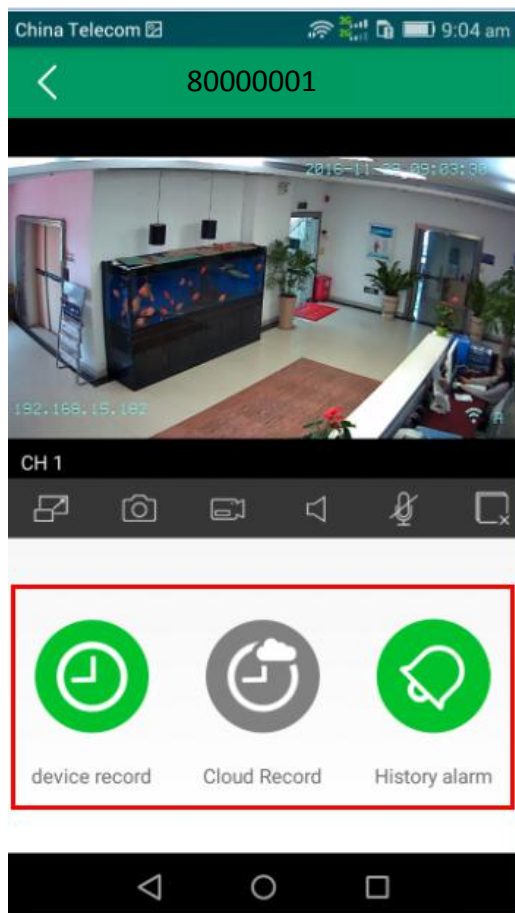


video search/playback
 please make sure if the SD card is installed in camera, and choose related date, search/playback before playback. And the memory of SD card is no less than 2GB. Otherwise, it's unable to recognize. When in low situation, it will cover the the earliest recording as per rule of time. For long-term storage, please save the video files regularly. Cloud storage can be used after log in. History events used to view the alarm information.

more function
 device setting: slide to the left, shown edit and delete

Edit: update firmware, advanced settings
 Update firmware: automatically detects the latest version
 Advanced settings: modify device's password, motion detection, recording times, time settings, initialization, storage settings

modify device's password: set private password
 motion detection: protection, capture, recording and protection time
 recording times: set video switching, code stream and time
 time settings: synchronize system time
 initialization: reset and restore factory settings
 storage settings: view and format SD card



FAQ

Why not search camera?

When connect the camera for the first time, please note your mobile and camera are on the same network (such as the same wifi), and make sure it connected.

It shows the device connected successfully, but not on the list.

You can make a wifi search.

Why can't record?

a: Please check if the Micro SD card is installed.

b: Please format your SD card.

Why the camera is offline or not connect to mibile?

a: Please check your Internet.

b: Please add the camera back to your mobile again.

After sonic configuring, why the device is offline?

a: The device doesn't supprt 5GHz band of dual band concurrent routers. Please connect 2.4GHz band and then click wifi search.

b: Please check if SSID and password are OK. Do not use the SSID nad password which included Chinese and special characters.

Why the device's time is always 2001-01-01?

a: It's the defaul time. After connected the network it will be automatic time synchronization.

b: Also, it can use you mobile to synchronize time manually.

Why is it very noisy when using intercom?

a: It causes whistle when your mobile is very near the device.

b: Also there will be a loud noise when bad network enviroment. You can reduce mobile volume to use.

packaging and accessories

camera 1pc

installation accessory 1pc

power adaptor 1pc

manual 1pc

can support table installation and hoisting