

16CH 1080P AHD NVR Hybrid Network dvr recorder support 4pcs HDD(62B16H80P)

● PRODUCT PICTURE

M TEAM



M TEAM

Adopt Newest HiSilicon
Chipset



New humanized
User Interface



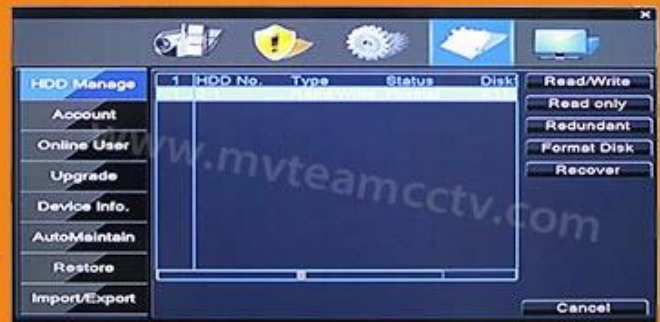
System come with
28 kinds of languages





Adjustable DVR menu transparency

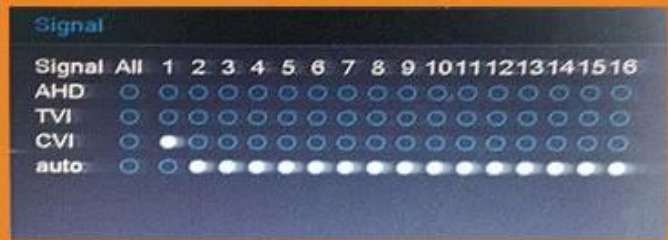
Support backup video records to DVR built-in redundant HDD



Support playback different time period video records in one screen, save time on find useful video records



5-in-1 hybrid modes:
AHD+TVI+CVI+CVBS+IP



DVR menu with Ping
command, convenient to do
DVR network testing



With UTC Function, control
analog camera and PTZ camera
on DVR thru coaxial cable





Support P2P remote view
by CMS and IE browser

Come with cloud ID, easy to
realize P2P remote view
by scan the QR Codes



Support remote view, record,
playback, receive motion
detection alarm by Iphone
and Andriod Smartphone

● SPECS

M'TEAM

- 1.AHD:16CH 1080P@20fps recording
8CH 1080P playback
- 2.HVR:8CH 1080P@15fps Analog + 8CH 1080P@15fps IP recording
4CH 1080P@25fps playback
- 3.NVR:16CH 1080P@25fps IP recording

4CH 1080P@25fps playback

4-Audio: 8ch input, 1ch output

5-Alarm: 4ch input, 1ch output

Model	62B16H80P	
Compression	H.264 Standard compression	
Operation	Embedded Linux	
Image coding-control	Image edit adjustable,both changable and fix stream optional	
Dual stream	Can be set up in each channel	
Monitor image quality	16*1080P (AHD), 16*1080P (NVR)	
Image dynamic detection	Multiple detection areas in each channel	
Video framerate	16*1080P 20FPS/CH AHD, 16*1080P 25FPS/CH NVR	
Image playback quality	AHD 8*1080P, NVR 4*1080P@25FPS	
Video mode	Support manual, automatic, dynamic monitoring, alarm trigger video mode	
Backup mode	U disk, USB portable disk, USB burn, Network storage and backup	
Operate mode	Mouse, Remote controller,Front Panel Control	
login locally	admin and password	
Save recording	local hard disk and network	
External interface	Video input	16*1080P 20FPS/CH AHD, 16*1080P 25FPS/CH NVR
	Audio input	8×RCA
	Network interface	10M/100M base-T Ethernet (RJ-45)
	USB connect port	2 x USB 2.0
	RS485	RS485*1
	Alarm input	4ch input
	Alarm output	1ch output
	Internal HDD	4 SATA HDD port
	Maximum capacity	Maximum 4TB each SATA□
Cell phone monitoring	Support Window Mobile, iPhone,iPad, Android	
Power	12V/4A	
DVR size	440(L)*380(W)*70(H)mm	
Weight	<5.5kg(without HDD)	

▼ Packages
M'TEAM

Brand Camera Package



Neutral Camera Package



Brand DVR Package





Contact us:

If you have any question, welcome to [contact us](#).

Your close attention to our company is highly appreciated.

Welcome to visit our official website www.mvteamcctv.com to view [video demos](#), [download product catalog](#) and read [CCTV technical articles](#).