

## ● Features

M'TEAM

Chipset: HI3521

Hybrid DVR, can connect IP camera, AHD Camera, CVBS Camera at same time

NVR Mode: 8\*1080P

AHD DVR Mode: 8\*1080H

Analog CVBS DVR Mode:8\*960H

Audio: 8ch input, 1ch output

Alarm: 4ch input, 1ch output

## ● Specifications

M'TEAM

Model	AH6408H80H	
Compression	H.264 Standard compression	
Operation	Embedded Linux	
Image coding-control	Image edit adjustable,both changable and fix stream optional	
Dual stream	Can be set up in each channel	
Monitor image quality	8*1080H (AHD), 8*1080P (NVR),8*960H(Analog)	
Image dynamic detection	Multiple detection areas in each channel	
Video framerate	8*1080H 20FPS/CH AHD, 8*1080P 25FPS/CH NVR,8*960H(Analog)	
Image playback quality	AHD 8*1080H 160FPS, 8*1080P 100FPS,8*960H(Analog)100FPS	
Video mode	Support manual, automatic, dynamic monitoring, alarm trigger video mode	
Backup mode	U disk, USB portable disk, USB burn, Network storage and backup	
Operate mode	Mouse, Remote controller,Front Panel Control	
login locally	admin and password	
Save recording	local hard disk and network	
External interface	Video input	8*1080H 20FPS/CH AHD, 8*1080P 25FPS/CH NVR,8*960H(Analog)100FPS
	Audio input	8×RCA
	Network interface	10M/100M base-T Ethernet (RJ-45)
	USB connect port	2 x USB 2.0
	RS485	RS485*1
	Alarm input	4ch input
	Alarm output	1ch output
	Internal HDD	2 SATA HDD port
	Maximum capacity	Maximum 4TB each SATA□
Cell phone monitoring	Support Window Mobile, iPhone,iPad, Android	
Power	12V/4A	
DVR size	340(L)*265(W)*70(H)mm	
Weight	<3.2kg(without HDD)	

## ● Product picture

M'TEAM

# 8CH 1080P WIFI Hybrid Security DVR

NVR+AHD DVR 1080

[www.mvteamcctv.com](http://www.mvteamcctv.com)



# M' TEAM

## Mobile Phone View

(All MVTEAM DVR, AHD DVR, CVI DVR, SDI DVR, NVR support)

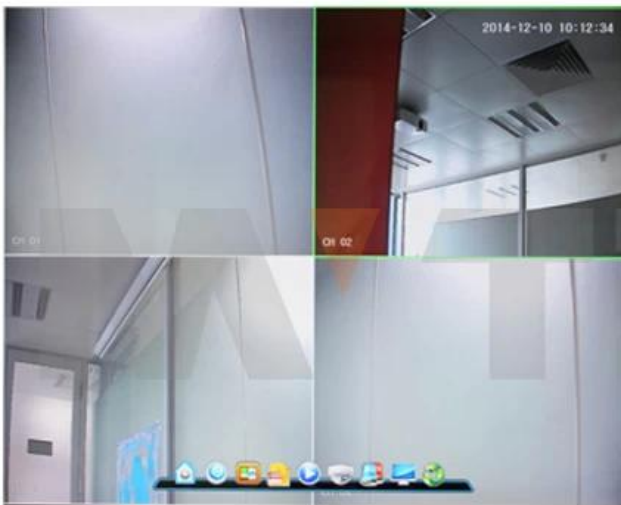


## Achieve Monitoring All kinds of Cameras in One Screen on Computer



### P2P Function Advantages:

- \*No stable IP address needed
- \*No DDNS setup needed
- \*No Router setup needed
- \*Reducing your after-sales cost



## Hybrid

The DVR have several modes for optional:

- \*AHD Camera + IP Camera + Analog CVBS Camera
- \*AHD Camera
- \*IP Camera
- \*Analog CVBS Camera



● EXHIBITIONS

