

8ch H.264 AHD CVI TVI Analog IP Recording P2P DVR 1080P(6408H80P)

● **Features**

M TEAM

Adopt Newest HiSilicon
Chipset



New humanized
User Interface



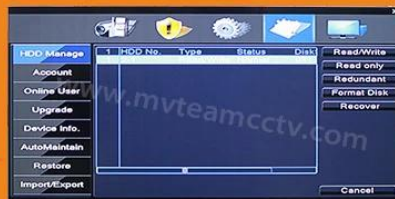
System come with
28 kinds of languages



Adjustable DVR
menu transparency



Support backup video
records to DVR built-in
redundant HDD



Support playback different
time period video records in
one screen, save time on find
useful video records



5-in-1 hybrid modes:
AHD+TVI+CVI+CVBS+IP



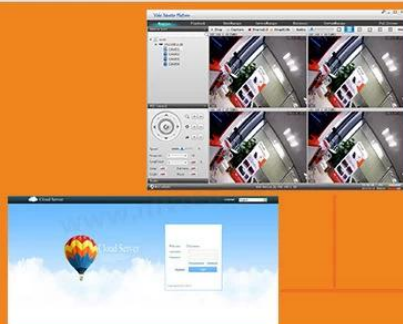
DVR menu with Ping command, convenient to do
DVR network testing



With UTC Function, control
analog camera and PTZ camera
on DVR thru coaxial cable



Support P2P remote view
by CMS and IE browser



Come with cloud ID, easy to
realize P2P remote view
by scan the QR Codes



Support remote view, record,
playback, receive motion
detection alarm by Iphone
and Andriod Smartphone



- 1.AHD\TVI\CVI:8CH 1080P@15fps recording, 4CH 1080P playback;
- 2.AHD\TVI\CVI:8CH 1080N@25fps recording, 8CH 1080N playback;
- 3.HVR 1:4CH 1080P@25fps Analog + 4CH 1080P@25fps IP recording, 2CH 1080P@25fps playback;
- 4.HVR 2:4CH 1080N@25fps Analog + 4CH 1080P@25fps IP recording, 2CH 1080P@25fps playback;
- 5.NVR:8CH 1080P@25fps IP recording, 4CH 1080P@25fps playback;
- 4-Audio: 4ch input
- 5-Alarm:4ch input,1ch output
- 6-Support digital zoom,P2P remote view

Model	6408H80P	
Compression	H.264 Standard compression	
Operation	Embedded Linux	
Image coding-control	Image edit adjustable,both changable and fix stream optional	
Dual stream	Can be set up in each channel	
Monitor image quality	1080P 1920*1080	
Image dynamic detection	Multiple detection areas in each channel	
Video framerate	AHD\TVI\CVI:8CH 1080P@15fps recording;NVR:8CH 1080P@25fps IP recording	
Image playback quality	AHD,TVI,CVI:1080P@15 playback ; NVR:4CH 1080P@25fps playback	
Video mode	Support manual, automatic, dynamic monitoring, alarm trigger video mode	
Backup mode	U disk, USB portable disk, USB burn, Network storage and backup	
Operate mode	Mouse, remote controller, front panel	
login locally	without password	
Save recording	local hard disk and network	
External interface	Video input	1080P 15FPS AHD,TVI,CVI,CVBS;1080P 25FPS NVR
	Audio input	4*RCA
	Network interface	10M/100M base-T Ethernet (RJ-45)
	USB connect port	2*USB 2.0
	RS485	RS485*1
	Alarm input	4CH
	Alarm output	1CH
	Internal HDD	2 SATA HDD port
	Maximum capacity	Maximum 4TB each SATA□
Cell phone monitoring	Support Window Mobile, iPhone,iPad, Android	
Power	12V/3A	
DVR size	340(L)*265(W)*70(H)mm	

Weight	<3.5kg(without HDD)
--------	---------------------

● PRODUCT PICTURE





M TEAM

● FAQs

M TEAM

1) Does the dvr come with hard disk?

The DVRs don't come with hard disk. If you need buy hard disk from us,we could install hard disk into DVR.

2)How to increase recording time?

- a.Install more hard disks
- b.set the dvr to motion detection record
- c.reduce the recording resolution and frame rate

3)Does the DVR support P2P?

Yes,the dvr come with cloud id,support P2P remote view on mobile phone and computer.

4)what's the mobile phone view app of the dvr?

The mobile phone app is "Topview"

5)What's the resolution of your dvr's?

720P, 1080N (1080H), 1080P optional

6)For Hybrid 5-in-1 DVRs,how to switch the modes?

Right click mouse,there is channel type option,click channel type can open the switch mode menu as below:



7)How many camera types can be connected at the same time on 5-in-1 hybrid dvr?

It supports 5 modes AHD,CVI,TVI,CVBS, IP at the same time.

Switch the dvr to part digital channels and part analog channels.

Digital channels for IP cameras,analog channels for AHD,TVI,CVBS and CVI.

For analog channels you can switch the AHD,TVI,CVBS and CVI singal at will in below menu:



8)How to correctly turn off DVR?

First, turn off in DVR menu, and then cut off the power. Do not cut off the power directly, DVR may be damaged due to misuse.

9)How to recover DVR password?

We could provide application "GenSuperPassword" ,you can use the application to recover password.

The DVRs don't come with hard disk. If you need buy hard disk from us,we could install hard disk into DVR.

10)Does your NVR support ONVIF IP camera ?

We suggest you make a test sample,NVR support ONVIF,but IP camera and NVR from different factory are not compatible.

11)Does NVR support POE?

At present,our NVR don't support POE.

More FAQs about DVRs,please check at:**DVR FAQs**

▼ Packages

M'TEAM

Brand Camera Package



Neutral Camera Package



Brand DVR Package

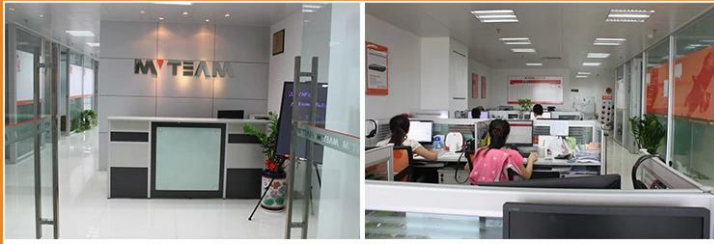


▼ Shipping

M'TEAM



▼ Sales Office and Sample room **M' TEAM**



▼ Our factory and production workflow **M' TEAM**



▼ Trade Shows **M' TEAM**



Contact us:

If you have any question, welcome to [contact us](#).

Your close attention to our company is highly appreciated.

Welcome to visit our official website www.mvteamcctv.com to view [video demos](#), [download product catalog](#) and read [CCTV technical articles](#).