

● Features



Chipset: HI3531
 Hybrid DVR, can connect IP camera, AHD Camera, CVBS Camera at same time
 NVR Mode: 16*1080P
 AHD DVR Mode: 16*720P
 Analog CVBS DVR Mode:16*960H
 Audio: 4ch input, 1ch output
 Alarm: No

● Specifications



Model	AH6416H	
Compression	H.264 Standard compression	
Operation	Embedded Linux	
Image coding-control	Image edit adjustable,both changable and fix stream optional	
Dual stream	Can be set up in each channel	
Monitor image quality	16*720P(AHD), 16*720P(NVR), 16*960H(Analog DVR)	
Image dynamic detection	Multiple detection areas in each channel	
Video framerate	720P 25FPS/CH AHD; 960H 25FPS/CH Analog DVR; 720P 25FPS NVR	
Image playback quality	AHD 16*720P 100FPS; Analog DVR 16*960H 400FPS; NVR 16*720P 100FPS	
Video mode	Support manual, automatic, dynamic monitoring, alarm trigger video mode	
Backup mode	U disk, USB portable disk, USB burn, Network storage and backup	
Operate mode	Mouse, remote controller, front panel	
login locally	without password	
Save recording	local hard disk and network	
External interface	Video input	720P 25FPS AHD; 960H 25FPS Analog DVR; 720P 25FPS NVR
	Audio input	4*RCA
	Network interface	10M/100M base-T Ethernet (RJ-45)
	USB connect port	2*USB 2.0
	RS485	RS485*1
	Alarm input	No
	Alarm output	No
	Internal HDD	1 SATA HDD port
	Maximum capacity	Maximum 4TB each SATA□
Cell phone monitoring	Support Window Mobile, iPhone,iPad, Android	
Power	12V/3A	
DVR size	340(L)*265(W)*70(H)mm	
Weight	<3.5kg(without HDD)	



Mobile Phone View

(All MVTEAM DVR, AHD DVR, CVI DVR, SDI DVR, NVR support)

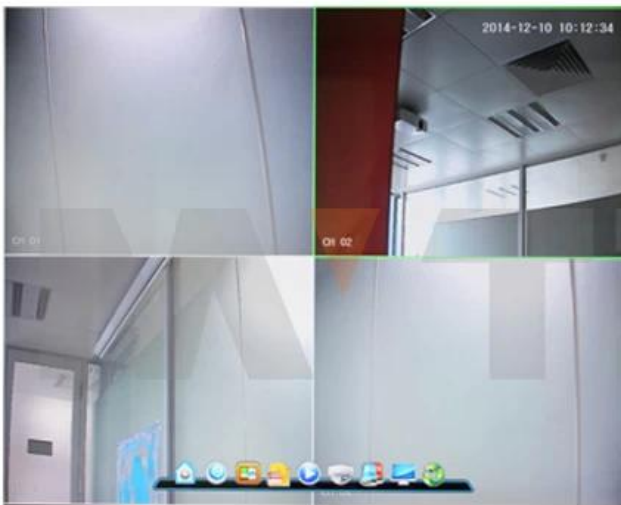


Achieve Monitoring All kinds of Cameras in One Screen on Computer



P2P Function Advantages:

- *No stable IP address needed
- *No DDNS setup needed
- *No Router setup needed
- *Reducing your after-sales cost



Hybrid

The DVR have several modes for optional:

- *AHD Camera + IP Camera + Analog CVBS Camera
- *AHD Camera
- *IP Camera
- *Analog CVBS Camera



EXHIBITIONS

M TEAM

