

Mini Size 4ch 1080N AHD TVI CVI CVBS IP Hybrid h 264 standalone dvr(6704H80H)

● PRODUCT PICTURE

M TEAM



M TEAM

Adopt Newest HiSilicon
Chipset



New humanized
User Interface

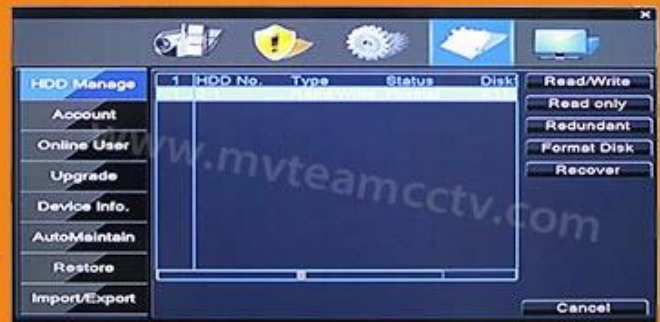
System come with
28 kinds of languages





Adjustable DVR menu transparency

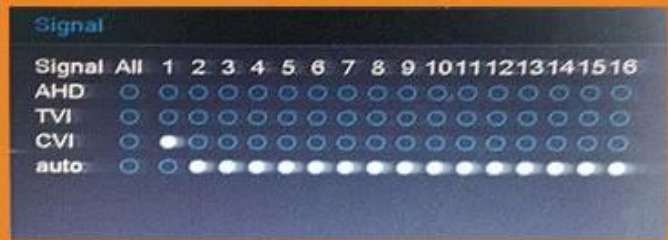
Support backup video records to DVR built-in redundant HDD



Support playback different time period video records in one screen, save time on find useful video records



5-in-1 hybrid modes:
AHD+TVI+CVI+CVBS+IP



DVR menu with Ping
command, convenient to do
DVR network testing



With UTC Function, control
analog camera and PTZ camera
on DVR thru coaxial cable





Support P2P remote view
by CMS and IE browser

Come with cloud ID, easy to
realize P2P remote view
by scan the QR Codes



Support remote view, record,
playback, receive motion
detection alarm by Iphone
and Andriod Smartphone

● SPECS

M' TEAM

- 1.AHD\TVI\CVI\TVI\CVI:4CH 1080N@20fps recording,
4CH 1080N playback;
- 2.HVR:2CH 1080N@20fps Analog + 2CH 1080P@25fps IP recording,
1CH 1080P@25fps playback;

3.NVR:4CH 1080P@25fps IP recording,
 1CH 1080P@25fps playback;
 4-Audio: 4ch input,1ch output

| | |
|--------------------------------|---|
| Model | 6704H80H |
| Compression | H.264 Standard compression |
| Operation | Embedded Linux |
| Image coding-control | Image edit adjustable,both changable and fix stream optional |
| Dual stream | Can be set up in each channel |
| Monitor image quality | 1080N 960*1080 |
| Image dynamic detection | Multiple detection areas in each channel |
| Video framerate | AHD\TVI\CVI:4CH 1080N@20fps recording NVR:4CH 1080P@25fps IP recording |
| Image playback quality | AHD\TVI\CVI: 4CH 1080N playback NVR: 1CH 1080P@25fps playback |
| Video mode | Support manual, automatic, dynamic monitoring, alarm trigger video mode |
| Backup mode | U disk, USB portable disk, USB burn, Network storage and backup |
| Operate mode | Mouse, Remote controller,Front Panel Control |
| login locally | admin and password |
| Save recording | local hard disk and network |
| External interface | |
| Video input | 180P@25FPS/CH NVR ,1080N@20FPS/CH AHD TVI CVI |
| Audio input | 4×RCA |
| Network interface | 10M/100M base-T Ethernet (RJ-45) |
| USB connect port | 2 x USB 2.0 |
| RS485 | RS485*1 |
| Alarm input | NO |
| Alarm output | NO |
| Internal HDD | 1 SATA HDD port |
| Maximum capacity | Maximum 4TB each SATA |
| Cell phone monitoring | Support Window Mobile, iPhone,iPad, Android |
| Power | 12V/2A |
| DVR size | 255*45*235mm |
| Weight | <2.7kg(without HDD) |

▼ Packages

M'TEAM

Brand Camera Package



Neutral Camera Package



Brand DVR Package



▼ Shipping

M'TEAM



Contact us:

If you have any question, welcome to [contact us](#).

Your close attention to our company is highly appreciated.

Welcome to visit our official website www.mvteamcctv.com to view [video demos](#), [download product catalog](#) and read [CCTV technical articles](#).