

16CH 1080P TVI CCTV DVR CVI CVBS IP Hybrid Real Time 1080P AHD DVR(62B16H80P)

● Features

M TEAM

Adopt Newest HiSilicon
Chipset



New humanized
User Interface



System come with
28 kinds of languages



Adjustable DVR
menu transparency



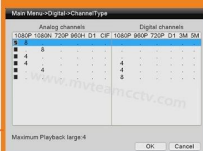
Support backup video
records to DVR built-in
redundant HDD



Support playback different
time period video records in
one screen, save time on find
useful video records



Hybrid DVR support three
kinds of modes:
full analog channels
analog+digital channels
full digital channels



DVR menu with Ping
command, convenient to do
DVR network testing



With UTC Function,control
analog camera and PTZ camera
on DVR thru coaxial cable



Support P2P remote view
by CMS and IE browser



Come with cloud ID,easy to
realize P2P remote view
by scan the QR Codes



Support remote view,record,
playback, receive motion
detection alarm by Iphone
and Andriod Smartphone



- 1.AHD\TVI\CVI:16CH 1080P@12fps recording, 16CH 1080P@12fps playback
- 2.AHD\TVI\CVI:16CH 1080P@20fps recording, 8CH 1080P@15fps playback
- 3.AHD\TVI\CVI:16CH 1080N@25fps recording, 16CH 1080N@25fps playback
- 4.12CH 1080P@15fps Analog + 4CH 1080P@25fps IP recording, 4CH 1080P@25fps playback
- 5.8CH 1080P@15fps Analog + 8CH 1080P@25fps IP recording, 4CH 1080P@25fps playback
- 6.4CH 1080P@15fps Analog + 12CH 1080P@25fps IP recording, 4CH 1080P@25fps playback
- 7.16CH 1080P@25fps IP recording,8CH 1080P@25fps playback
- 8.Support digital zoom,P2P Remote view
- 9.Alarm: 4ch input, 1ch output
- 10.Audio:16ch input

| | | |
|-------------------------|---|----------------------------------|
| Model | 62B16H80P | |
| Compression | H.264 Standard compression | |
| Operation | Embedded Linux | |
| Image coding-control | Image edit adjustable,both changable and fix stream optional | |
| Dual stream | Can be set up in each channel | |
| Monitor image quality | 1080P 1920*1080 | |
| Image dynamic detection | Multiple detection areas in each channel | |
| Video framerate | AHD\TVI\CVI:16CH 1080P@20fps recording,16CH 1080P@25fps IP recording | |
| Image playback quality | AHD\TVI\CVI:8CH 1080P@15fps playback; NVR:8CH 1080P@25fps playback | |
| Video mode | Support manual, automatic, dynamic monitoring, alarm trigger video mode | |
| Backup mode | U disk, USB portable disk, USB burn, Network storage and backup | |
| Operate mode | Mouse, Remote controller,Front Panel Control | |
| login locally | admin and password | |
| Save recording | local hard disk and network | |
| External interface | Video input | 16CH 1080P AHD TVI CVI DVR IP |
| | Audio input | 8×RCA |
| | Network interface | 10M/100M base-T Ethernet (RJ-45) |
| | USB connect port | 2 x USB 2.0 |
| | RS485 | RS485*1 |
| | Alarm input | 4ch input |
| | Alarm output | 1ch output |
| | Internal HDD | 4 SATA HDD port |
| | Maximum capacity | Maximum 4TB each SATA |
| Cell phone monitoring | Support Window Mobile, iPhone,iPad, Android | |
| Power | 12V/4A | |
| DVR size | 440(L)*380(W)*70(H)mm | |
| Weight | <5.5kg(without HDD) | |





M'TEAM

● FAQs

M'TEAM

1) Does the dvr come with hard disk?

The DVRs don't come with hard disk. If you need buy hard disk from us, we could install hard disk into DVR.

2) How to increase recording time?

- a. Install more hard disks
- b. set the dvr to motion detection record
- c. reduce the recording resolution and frame rate

3) Does the DVR support P2P?

Yes, the dvr come with cloud id, support P2P remote view on mobile phone and computer.

4) What's the mobile phone view app of the dvr?

The mobile phone app is "Topsview"

5) What's the resolution of your dvr's?

720P, 1080N (1080H), 1080P optional

6) For Hybrid 5-in-1 DVRs, how to switch the modes?

Right click mouse, there is channel type option, click channel type can open the switch mode menu as below:



7) How many camera types can be connected at the same time on 5-in-1 hybrid dvr?

It supports 5 modes AHD, CVI, TVI, CVBS, IP at the same time.

Switch the dvr to part digital channels and part analog channels.

Digital channels for IP cameras, analog channels for AHD, TVI, CVBS and CVI.

For analog channels you can switch the AHD, TVI, CVBS and CVI signal at will in below menu:



8) How to correctly turn off DVR?

First, turn off in DVR menu, and then cut off the power. Do not cut off the power directly, DVR may be damaged due to misuse.

9) How to recover DVR password?

We could provide application "GenSuperPassword", you can use the application to recover password.

▼ Packages

M'TEAM

Brand Camera Package



Neutral Camera Package



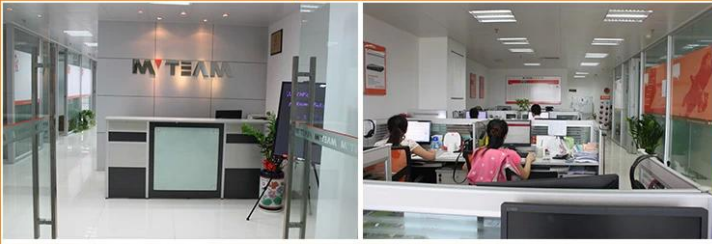
Brand DVR Package





▼ Sales Office and Sample room

M' TEAM



▼ Our factory and production workflow

M' TEAM



▼ Trade Shows

M' TEAM



Contact us:

If you have any question, welcome to [contact us](#).

Your close attention to our company is highly appreciated.

Welcome to visit our official website www.mvteamcctv.com to view [video demos](#), [download product catalog](#) and read [CCTV technical articles](#).