

Electric Door Lock OEM Front Door Keyless Entry Fingerprint And Code Touchscreen Smart Electronic Mortise Lock



Features

- 1- Multiple unlock mode: fingerprint, password, card, mechanical key
- 2- FPC semi-conductor sensor, 360 degree fingerprint recognition
- 3- C-level lock cylinder, three types lock mortises for your choice.
- 4- Touch screen keypad, see crystal clear numbers at night

- 5- Virtual password, prevent strangers from peeping and better protect privacy.
- 6- With doorbell function
- 7- Powered by 4pcs AA alkaline batteries, 6 months & 180000 times using.
- 8- With USB port for emergency charging
- 9- Suitable for home/office/house security, fit for wooden door, metal door, composite door, fire door group
- 10- Color: Silver, Titanium gray, Red brone, Gold optional

Specs

Model	K7-ZKM
Material	Zinc alloy
Size	360*78mm
Unlock	Fingerprint, Password, Swipe, Key
Fingerprint recognition	360 degree FPC semi-conductor, 100 pieces capacity
Swipe	200 sheets
Password capacity	50 groups
Cylinder grade	C-level lock cylinder
Lock body material	Stainless steel
Lock body size	standard 240mm * 24mm, optional: 240mm*30mm, 388mm*40mm
Other functions	Intelligent Voice, Doorbell, Night Crystal Display
Power supply	4pcs AA batteries
Emergency charging	With backup USB port for emergency charging
Color	Silver, Titanium gray, Red brone, Gold 4 colors optional
Scope of application	Security door, wooden door, composite door, fire door group

Pictures



M TEAM



M TEAM

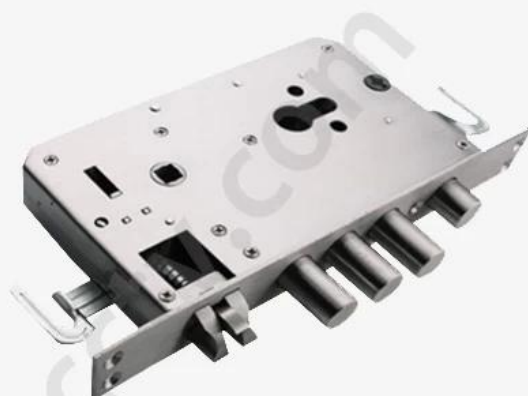




C-level lock cylinder, three types lock mortises for your choice.



240mm*24mm





240mm*30mm




388mm*40mm

Night Crystal Display **HD**

Doorbell 

Double unlock 

Smart voice navigation 



Virtual password

Random number added before or after the correct password, as long as input the real password continuously, then still can unlock. It can prevent strangers from peeping and better protect privacy.



Power Supply

4 x AA(5 alkaline) batteries,
6 months & 180000 times using.



USB Charge

With backup USB port for
emergency charging.

Warmly notice:

Due to international shipping problem, we will not deliver batteries come with locks.
Please buy 4 section 5-Alkaline batteries by yourself from local market.

Package & Accessories



Why Do You Need the Smart Door Lock?



Keep your property safe when nobody at home



Don't need worry about can't find the key when going home



No need to bring a bunch of keys when exercising



Don't need pay to unlocking company when losing the key

Door Opening Direction



Left Handle



Right handle

Matters needing attention:

There are 4 door types as below drawing showing, Please let us know:

1.what types of the doors?

2.how many quantity per each type?



A

Left Handle (push)



B

Right Handle (Push)



C

Left Handle (pull)



D

Right Handle (Pull)

A: left handle push the door to enter the room.

B: left handle pull the door to enter room.

C: right handle push the door to enter the room.

D: right handle pull the door to enter the room.

Are there heaven and earth hook of the door?



How to check?

1. Touch the top edge of the door to check if there are lock holes.
2. When the door lock is in pop up status, check whether there are lock tongues pops out on the top edge of the door.

With bolt No bolt

Measurement



- A Lock side bar length
- B Lock side bar width
- C Door thickness
- D Door frame bar width
- E Door frame bar length

Please send above measurement data to us.
We will recommend the correct locks to you.

Contact us

We export the smart door locks to all over the world.

If you have any questions or inquiry about the products, welcome to [contact us](#).

We will reply you within 24 hours and quote the best wholesale prices to you.