

Megapixel 8mm Lens Waterproof IP66 AHD Camera Security System For Communities MVT-AH32

FEATURES

- 1. 1/3" CMOS 1/2.8" sensor (optional)
- 2. 42pcs IR leds, 35m IR distance
- 3. Waterproof Rating: IP66
- 4. 75-3 general support under the coaxial cable transmission distance without loss of over 500M
- 5. High-speed, long distance, real-time transmission
- 6. Support OSD menu, UTC Function

SPECS

Model	MVT-AH20A	MVT-AH12T	MVT-AH12P	MVT-AH12F	MVT-AH20W	MVT-AH25S
Sensor	CMOS OV9742+8950	CMOS OV9742+8950	CMOS OV9742+8950	CMOS OV9742+8950	CMOS OV9742+8950	CMOS OV9742+8950
UTC Function	Yes	Yes	Yes	Yes	Yes	Yes
OSD/AL	Yes	Yes	Yes	Yes	Yes	Yes
Video Output	TVCVI/AVHD	TVCVI/AVHD	TVCVI/AVHD	TVCVI/AVHD	BHD	BHD
Lens	Adjustable, 3mm, 4mm, 5mm, 6mm, 8mm, 12mm					
IR Led	35pcs IR LED					
IR Distance	35m IR Distance					
Max. Illumination	0.1Lux@12m					
Shutter	1/25s-1/1000s					
Synchronization	Internal					
REC	Optional					
OSD	Optional					
WDR	Optional					
Day/Night	Auto / Manual / Off / Night / Color / B&W					
Transmission	Over 500m via 75-3 coaxial cable					
Power Supply	DC 12V/1.50A					
Material	ABS					
Working Temperature	-30°C~+60°C(less than 90%RH@no condensation)					
Warranty	2 years					
Power Consumption	Max 10W					

Pictures



3-Axis Bracket



Size



Contact us to ask for the latest price list!

FAQS

- Q1: What's the mean of UTC function?
It means control the camera menu via dvr, more info about UTC function, please check below posts:
[What settings of AHD cameras can be realized by UTC function?](#)
[UTC Function: How to switch the AHD, TVI, CVI Modes for 2MP Hybrid CCTV Cameras?](#)
[How to call UTC control Menu For MVT-AH12, S-3, S-3A\(S\)](#)
- Q2: Can I view the camera on mobile phone and computer?
After connect the camera to DVR, you can view the camera thru DVR's network view function.
- Q3: Can I test sample before place mass order?
Sure, sample order is welcomed. MOQ is 1pc.
- Q4: Can I buy the camera with my own brand?
Yes, we provide OEM service.

Packages



Package: M'TEAM Brand Box Or Neutral Box Or Specified by customer.

Shipping

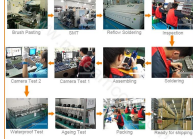


Shipping: Based on your demands to choose the best shipping way.

Sales Office and Sample room



Our factory and production workflow



Trade Shows



Do you want to know more about the [AHD CCTV camera](#) and our factory?
If yes, take action to [Contact Us](#) now!
Your close attention to our company is highly appreciated.