

● FEATURES



1. Economical Security camera
2. Nice image quality and cheap price
3. widely compatible, able to match AHD DVR and All Standalone DVR
4. Easy to operate, Plug and Play
5. Advanced CMS software supporting 3G remote view

● SPECS



Model	cctv camera	
Compression	H.264 Standard compression	
Operation	Embedded Linux	
Image coding-control	Image edit adjustable, both changable and fix stream optional	
Dual stream	Can be set up in each channel	
Monitor image quality	16*720P(AHD), 16*960H(Analog DVR)	
Image dynamic detection	Multiple detection areas in each channel	
Video framerate	720P 25FPS/CH AHD, 960H 25FPS/CH Analog DVR	
Image playback quality	AHD 720P 100FPS, Analog DVR 16*960H 100FPS	
Video mode	Support manual, automatic, dynamic monitoring, alarm trigger video mode	
Backup mode	U disk, USB portable disk, USB burn, Network storage and backup	
Operate mode	Mouse, Remote controller, Front Panel Control	
login locally	admin and password	
Save recording	local hard disk and network	
External interface	Video input	720P 25FPS/CH AHD, 960H 25FPS/CH Analog DVR
	Audio input	1×RCA
	Video output	1*VGA, 1*HDMI
	Audio output	1*RCA, 1*HDMI
	Network interface	10M/100M base-T Ethernet (RJ-45)
	USB connect port	2 x USB 2.0
	RS485	RS485*1
	Alarm input	NO
	Alarm output	NO
Hard disk	Internal HDD	1 SATA HDD port
	Maximum capacity	Maximum 4TB each SATA□
Cell phone monitoring	Support Window Mobile, iPhone, iPad, Android	
Power	12V/2A	
DVR size	240(L)*260(w)x60(H)mm	
Weight	2.0kg(W/O HDD)	

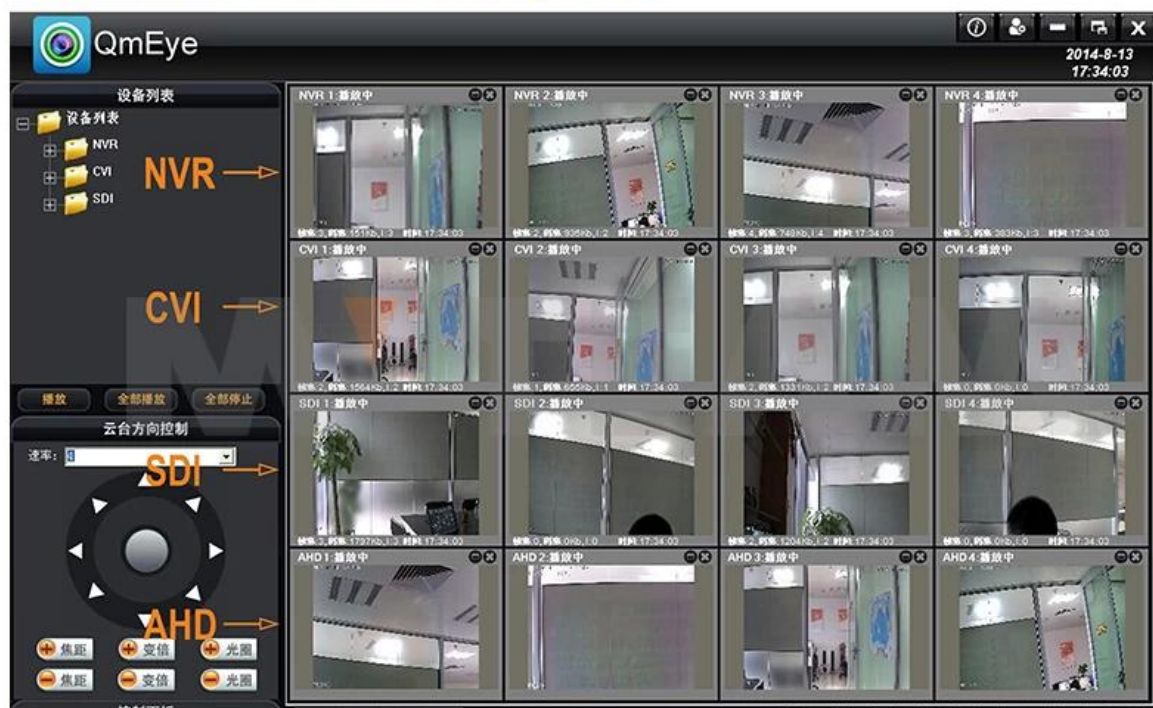


Mobile Phone View

(All MVTEAM DVR, AHD DVR, CVI DVR, SDI DVR, NVR support)

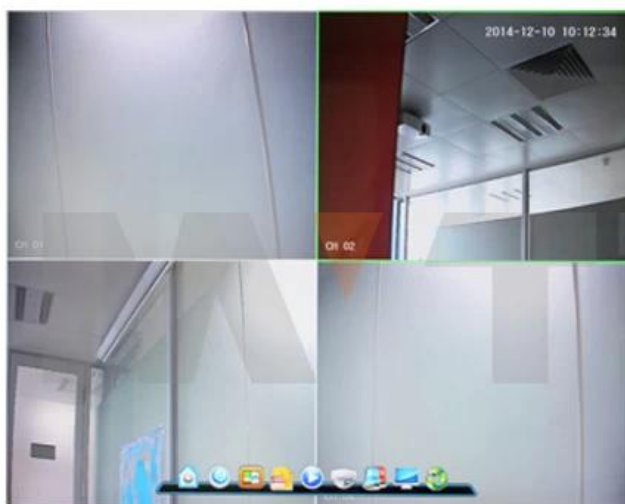


Achieve Monitoring All kinds of Cameras in One Screen on Computer



● DVR Menu

M TEAM



● FACTORY & OFFICE

M' TEAM



● EXHIBITIONS

M' TEAM

